

EXAMVISION



QuickStart
Total LED & PowerGo
Control Unit

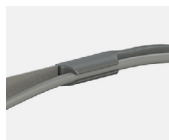
Attachment of Total Intense/Pure LED



1
Attach the lamp to the framepart.



2
Connect the USB-C connector to the lamp.



3
Fix the cable on the right or left temple.



4
Connect the USB-C connector to the PowerGo Control Unit.

Operation of PowerGo control unit

Power on



Press the Power button once.

Changing light intensity



One click increases the light intensity, and additional single clicks will cycle the unit through High, Medium and Low intensity settings.

Power off



Press and hold for two seconds.

Using the belt clip and pocket stabiliser



PowerGo can be clipped to your pocket or belt. You can also clip-on the pocket stabiliser and place PowerGo in your pocket.

Video

You can find the instructional video on our YouTube channel (www.youtube.com/@examvisionchannel) or by scanning the QR code.



Additional information

Read the full Instructions for use for the PowerGo here: www.examination.com/support

Read the full Instructions for use for the Total Pure and the Total Intense here: www.examination.com/support


Or just scan the QR code.






 facebook.com/examVisiondk

 instagram.com/examvision/

 linkedin.com/company/examvision-aps

 youtube.com/@examvisionchannel

www.examvision.com